



## About Motswedi

### Economic Transformation Specialists

Motswedi is a leading investment management and advisory firm committed to driving economic growth and transformation in South Africa. We partner with institutions to align capital with high-impact opportunities, delivering superior financial returns while fostering inclusive growth. Our mission is simple: create lasting value for both investors and society.

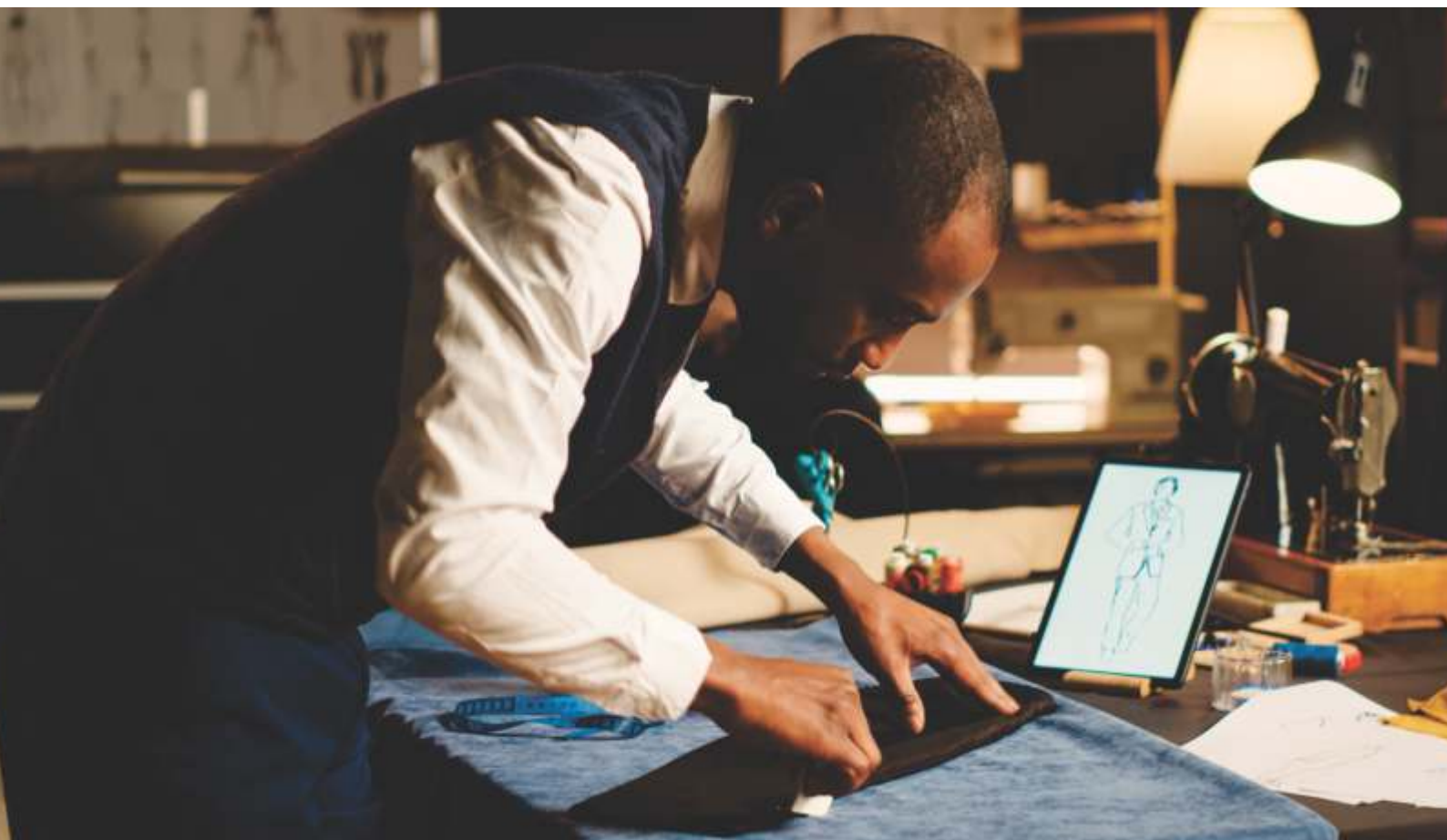
#### Our Investment Philosophy

At Motswedi, we believe economic growth and transformation is a fundamental driver of long-term financial performance. By embedding economic transformation into our investment process, we access underrepresented markets, emerging talent, and unique sources of return that traditional approaches overlook. Our diversified strategy includes:

**Passive Investments:** A cost-effective foundation for stable, long-term returns.

**Private Markets:** Direct impact through enterprise development, infrastructure, and private equity/credit.

**Active Management:** Supporting emerging asset managers for alpha generation through multi-managed funds.



"Diverse investment teams outperform their peers by up to 25%." - McKinsey



# Our services



## Investment Advisory:

Tailored strategies that achieve your financial goals through economic transformation and sustainability, ensuring compliance and long-term value.



**Research:** Proprietary tools like the Risk Navigator provide deep market insights, uncovering hidden opportunities and assessing risks for informed decision-making.



## Enterprise & Supplier Development (ESD):

We empower black-owned financial services businesses with funding, operational support, and market access, enhancing your business' B-BBEE scorecard while driving economic growth.



**Portfolios:** Access a range of leading solutions, from cost-effective passive funds to high-impact thematic and multi-managed portfolios.



# Why choose Motswedi?



## Expertise

Deep understanding of South Africa's economic landscape and regulatory environment.

## Innovation

Leveraging AI, alternative data, and proprietary research for predictive market insights.

## Impact

Contributing to job creation, economic resilience, and a more inclusive financial system.

## Partner with Motswedi

Join us in shaping a prosperous, inclusive South Africa while achieving your investment goals.



### Contact Us:

Contact us today to explore how your investments can drive change and deliver results.



Phone: +27 11 656 1160



Email: [info@motswedi.co.za](mailto:info@motswedi.co.za)



Website: [www.motswedi.co.za](http://www.motswedi.co.za)



<https://www.linkedin.com/company/motswedi/>

